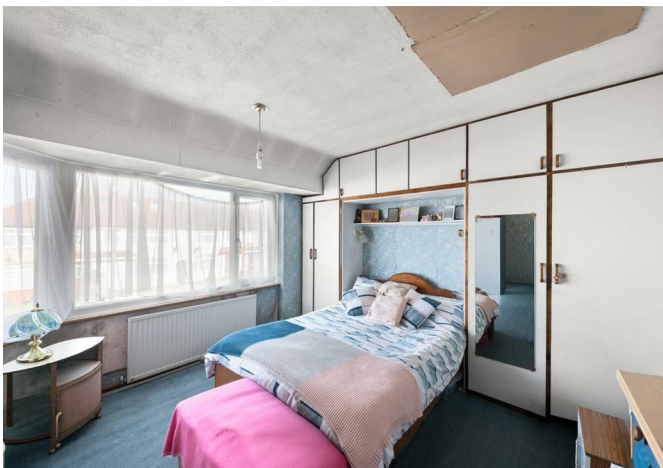


ALLDAY
& MILLER



Minterne Way, Hayes, UB4 0PD
£500,000

3 1 1 D



Minterne Way, Hayes, UB4 0PD

£500,000

- Three Bedrooms
- Popular Location
- Good Transport Links
- Large Rear Garden
- New Windows Installed
- House - Freehold
- Close To Southall Broadway
- Driveway
- Potential To Extend STPP
- Excellent Schools Nearby

Description

A well-presented three-bedroom home in a sought-after residential location. Offering spacious accommodation and excellent extension potential (STPP), this property is ideal for families or buyers looking to create their perfect home.

This well-proportioned home offers a bright and airy reception/dining room, creating a welcoming space for everyday living and entertaining, along with a fitted kitchen.

Upstairs, the first floor comprises three bedrooms and a family bathroom.

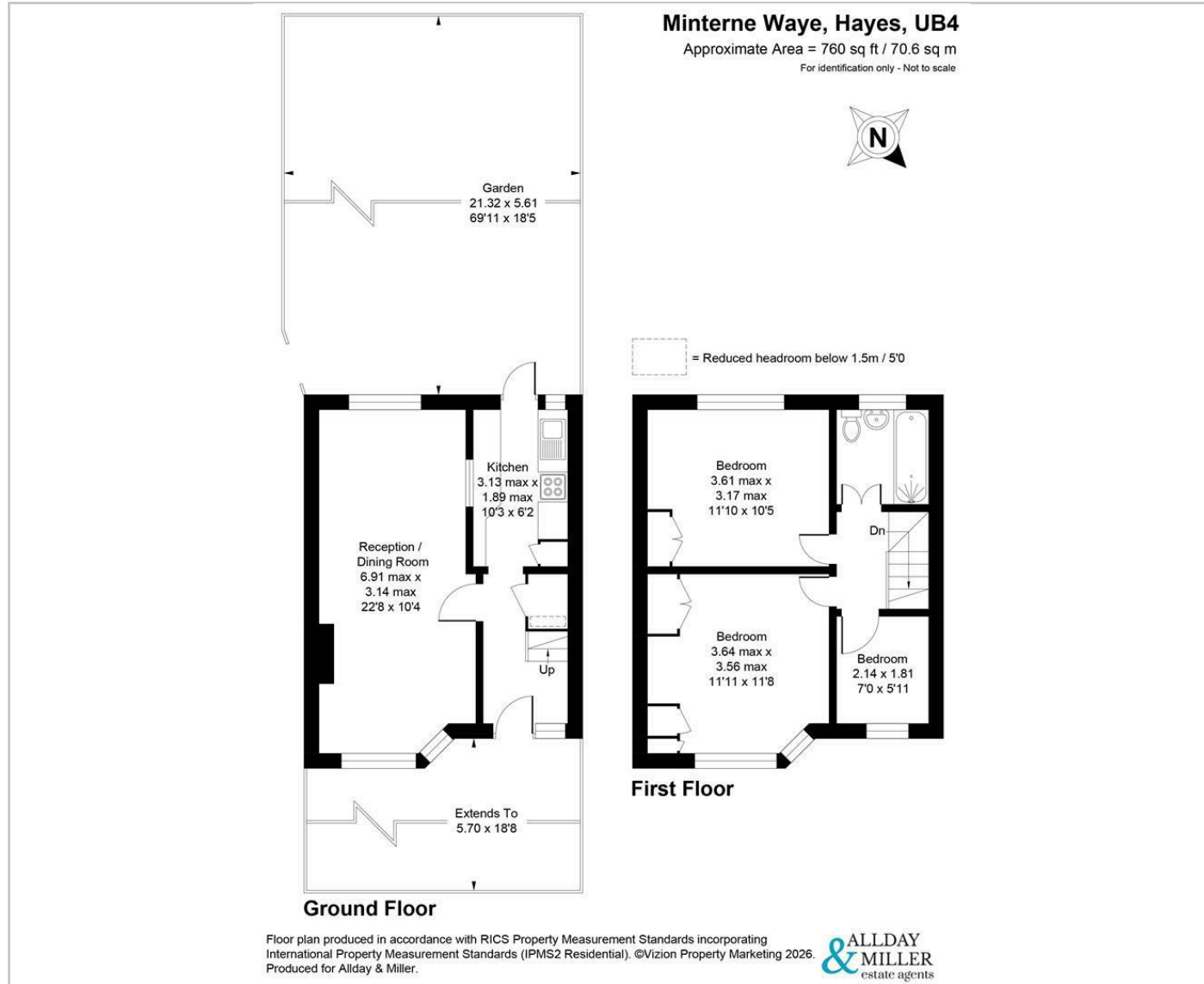
Outside, the property benefits from a front driveway providing off-road parking and a private rear garden, predominantly laid to lawn.

Situation

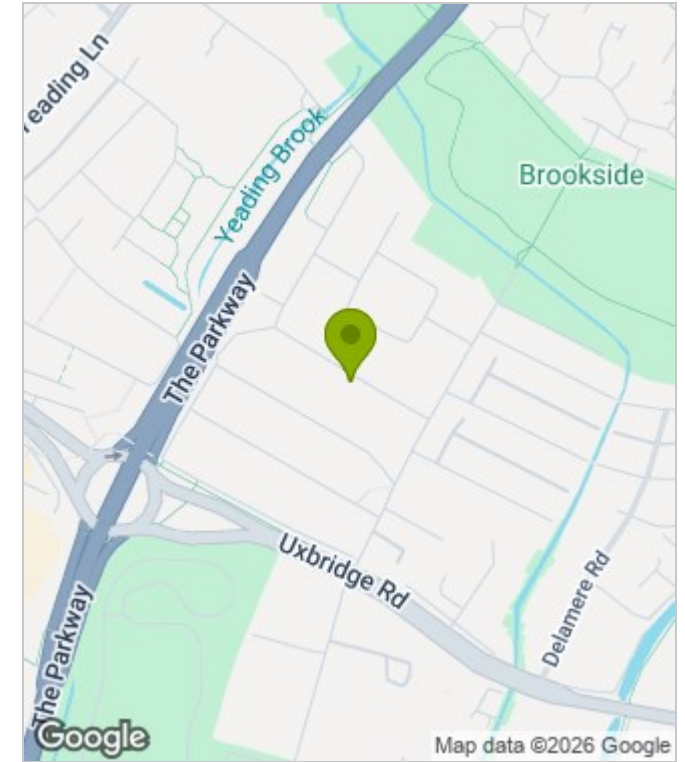
Minterne Way with its easy access to a number of local amenities including the Uxbridge Road with its variety of shops, cafes, takeaways and restaurants. A number of highly regarded schools including Yeading primary school and Barnhill Community high school are just a short drive away. Several road links with the M4/M25 and the A40 all within easy reach. For the commuters Hayes and Harlington station is an 7 minute drive away with the Elizabeth line giving easy links to central London and the surrounding area.



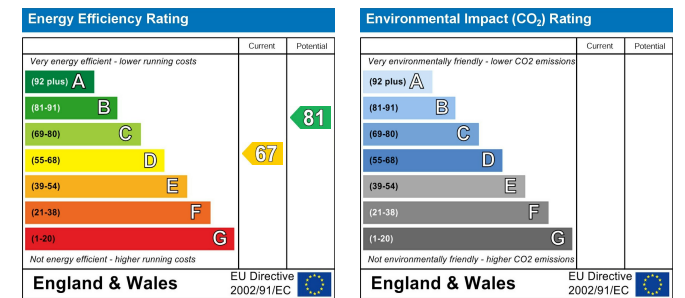
Floor Plans



Area Map



Energy Performance Graph



These particulars, whilst believed to be accurate are set out as a general outline only for guidance and do not constitute any part of an offer or contract. Intending purchasers should not rely on them as statements of representation of fact, but must satisfy themselves by inspection or otherwise as to their accuracy. No person in this firm's employment has the authority to make or give any representation or warranty in respect of the property.